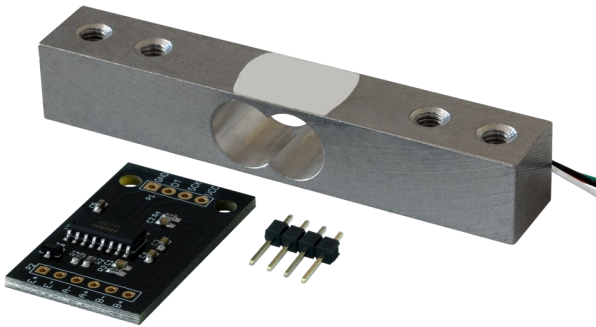


# 5 KG LOAD CELL

with amplifier board



With this load cell and amplifier board, you can build your own scale in conjunction with a microcontroller or single-board computer.

The amplifier board contains an HX711 24 bit A/D converter to convert the analogue signal of the load cell into a weight with high accuracy.

Due to its high popularity, there are many application examples online for this converter.

## MAIN FEATURES

Model	HX711-05
Special feature	Integrated 24 bit A/D-converter
Measuring range	Up to 5 kg
Load cell accuracy	$\pm 0,02\%$ F.S
Items delivered	Load cell, amplifier board, pin header (4 pins)

## FURTHER SPECIFICATIONS

Supply voltage	2.6 ~ 5.25 V
Current consumption	< 1.5 mA
Interface	Serial; 2-wire
Dimensions PCB	34.2 x 20 x 3 mm
Dimensions load cell	80 x 15 x 14.2 mm
Cable length	25 cm
Weight	33.5 g

## FURTHER DETAILS

Article No.	SEN-HX711-05
EAN	4250236822273
Customs Tariff No.	84239010

