

# FINE DUST SENSOR

SEN-HM3301



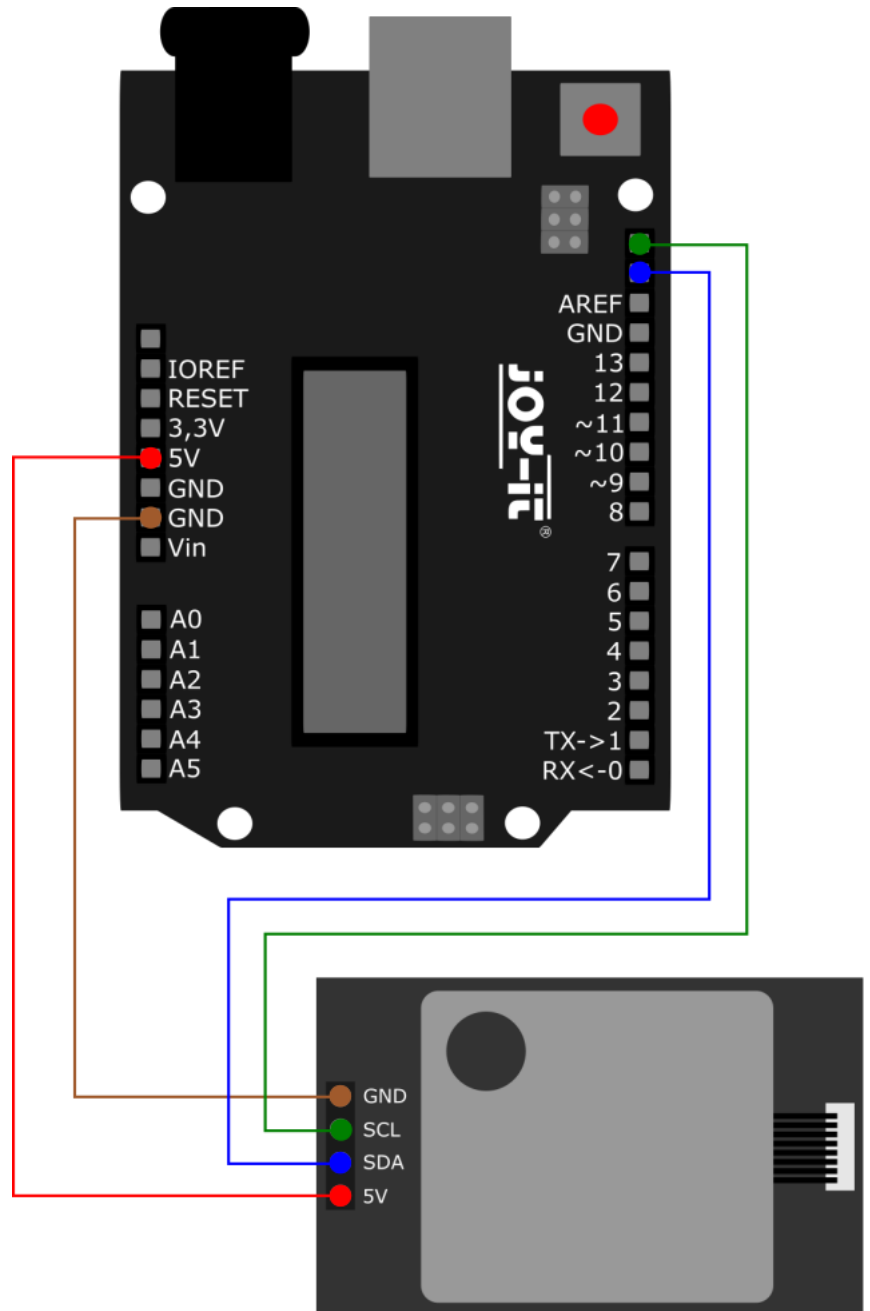
## 1. GENERAL INFORMATION

Dear customer,  
thank you very much for choosing our product.  
In following, we will introduce you to what to observe while starting up  
and using this product.  
Should you encounter any unexpected problems during use, please do  
not hesitate to contact us.

## 2. USAGE WITH ARDUINO

### 2.1 Connection

Arduino	HM3301
GND	GND
D19 (SCL)	SCL
D18 (SDA)	SDA
5V	5V



### 2.2 Code example

This fine dust sensor can be operated utilizing the [Seeed PM2.5 sensor HM3301](#), which was published by [Seeed Studio](#) under the [MIT license](#). After installing this library in your Arduino IDE, you can find the code example **basic\_demo** under **File** → **Examples** → **Grove - Laser PM2.5 Sensor HM3301**. You can upload this code sample using **Upload**. Before doing so, however, make sure that the **Port** and **Board** are set correctly under **Tools**.

### 3. OTHER INFORMATION

Our information and take-back obligations according to the Electrical and Electronic Equipment Act (ElektroG)

#### Symbol on electrical and electronic equipment:



This crossed-out dustbin means that electrical and electronic appliances do not belong in the household waste. You must return the old appliances to a collection point.

Before handing over waste batteries and accumulators that are not enclosed by waste equipment must be separated from it.

#### Return options:

As an end user, you can return your old device (which essentially fulfils the same function as the new device purchased from us) free of charge for disposal when you purchase a new device.

Small appliances with no external dimensions greater than 25 cm can be disposed of in normal household quantities independently of the purchase of a new appliance.

#### Possibility of return at our company location during opening hours:

SIMAC Electronics GmbH, Pascalstr. 8, D-47506 Neukirchen-Vluyn, Germany

#### Possibility of return in your area:

We will send you a parcel stamp with which you can return the device to us free of charge. Please contact us by email at [Service@joy-it.net](mailto:Service@joy-it.net) or by telephone.

#### Information on packaging:

If you do not have suitable packaging material or do not wish to use your own, please contact us and we will send you suitable packaging.

### 4. SUPPORT

If there are still any issues pending or problems arising after your purchase, we will support you by e-mail, telephone and with our ticket support system.

Email: [service@joy-it.net](mailto:service@joy-it.net)

Ticket system: <http://support.joy-it.net>

Telephone: +49 (0)2845 9360-50 (10-17 o'clock)

For further information please visit our website:

[www.joy-it.net](http://www.joy-it.net)