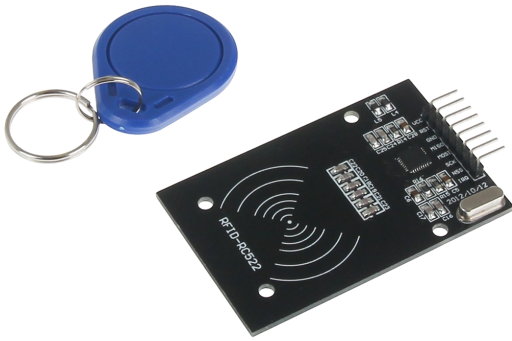
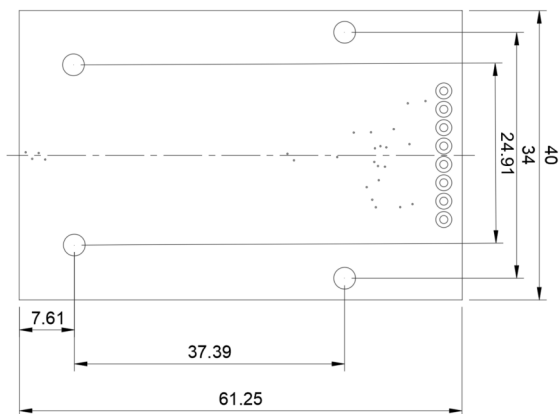


RFID MODULE



The RFID module is equipped with the integrated MFRC522 and communicates via SPI. It is based on the Mifare protocol and allows the reading and writing of RFID tags.



MAIN FEATURES

Model	RFID-RC522
Chip	MFRC522
Dimensions	40 x 60 x 8 mm
Weight	24 g
Items delivered	SBC-RFID-RC522
Compatible to	Raspberry Pi, Arduino, BBC micro:bit, Raspberry Pi Pico

FURTHER SPECIFICATIONS

Supply voltage	3,3 V
Logic level	3,3 V
Frequency	13,56 MHz
Interface	SPI
RFID protocol	Mifare
Operating temperature	-25 bis 85 °C

ADDITIONAL DETAILS

Article No.	SBC-RFID-RC522
EAN	4250236813158
Customs Tariff No.	8473302000