

# Joystick Remote Control

Manual



Dear customer,  
thank you for purchasing our product. In the following we have listed, what to consider during commissioning:

### 1. Content

- Case
- 2x Joystick
- Button
- LED
- Cablesset



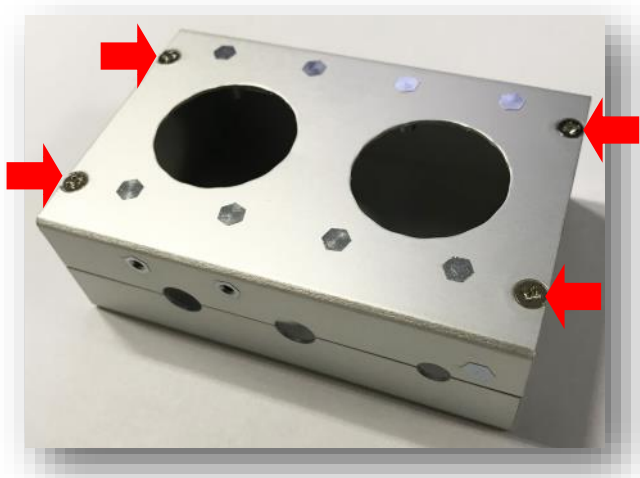
## 2. safety instructions



Please observe the following safety instructions for protection against electric shocks and injuries.

- Keep operating- and safety instructions! When passing the device to a other person, they must be handed with it.
- Use this device only for the specific application and according to the operating instructions. Follow our instructions during assembly and use, this is the only way to assure the assembly works properly, read the instructions completely before you begin assembly / use.
- Check existing mains voltage and specified mains voltage before you start. In no case may be deviated from the specified mains voltage.
- We recommend gloves when mounting the remote control, because the opening and punching points can have sharp edges.
- All connection cables to the Raspberry Pi, components and remote control must be intact. In case of damage, the corresponding cable must be replaced.
- When working on the kit, the power supply must first be disconnected and against reconnection secured. (e.g. by removing the power supply)
- Protect the device from moisture and rain. Use only in dry rooms. A usage under rain, in humid rooms or even in or under water must under no circumstances be executed.
- By the consumption of alcohol, medicines and drugs, as well as by illness, fever and tiredness their can Responsiveness and your perception will be affected. In this case, the device should not be used.
- The robotic arm may be assembled and used by children over the age of 12 under adult supervision. The adult must be able to intervene at any time. Explain the safety rules to your child in detail and make sure that they understand them. Secure the robot arm against unauhorized use.

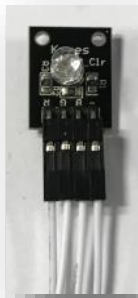
### Assembly - remote control



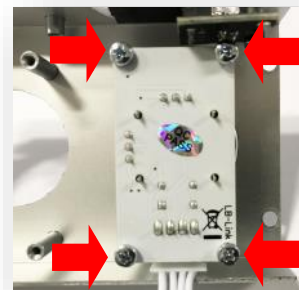
Open the case



Remove the cover

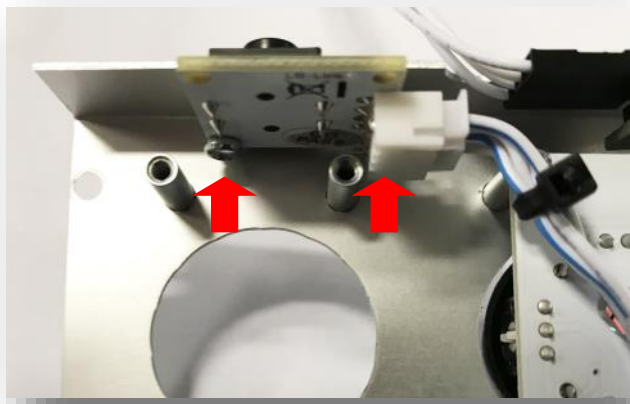


Equip the LED with the 4 individual cables and screw them with a screw in the case. Please mark the cables, so that you know later which contacts these have.

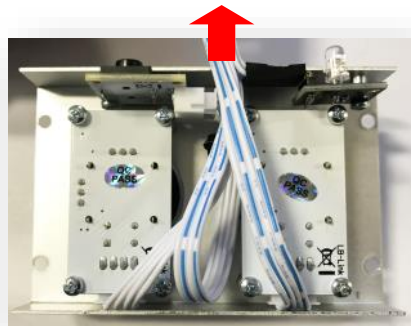
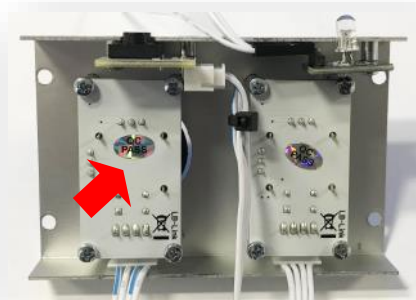


Joystick with a 4-pin connector. Fit the cable and install the Joystick under the LED with 4 screws.

### Assembly - remote control



Fit the push-button with the 4-pole (crossed, marked with cable tie) cable and attach it with two screws in the case.



The second joystick with the 4-pin. Fit and install the cable. Now all cables lead through the existing opening to the outside and then the case can be closed.



## 7. Service & Contact

**We are also there for you after your purchase.**

Should any questions remain unanswered or problems arise, we will also assist you by e-mail, telephone and ticket-support-system.

**E-Mail:**

service@joy-it.net

**Ticket-System:**

<http://support.joy-it.net>

**Telephone:**

+49 (0)2845 98469 – 66 (11- 18 a Clock on weekdays)

For more information visit our website  
[www.joy-it.net](http://www.joy-it.net)

For current instructions, see

<http://anleitung.joy-it.net>

Current downloads can be found at

<http://downloads.joy-it.net>

More products from Joy-IT:

