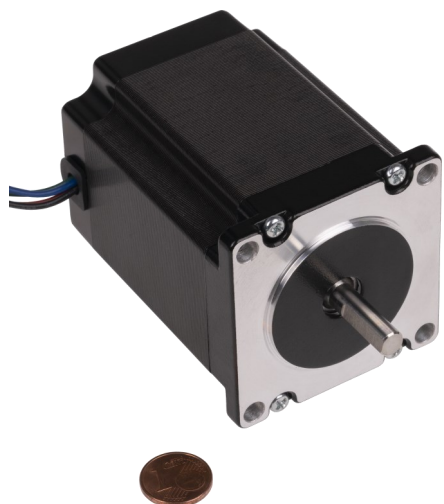


# NEMA23 HIGH TORQUE STEPPER MOTOR

NEMA23-05



Our NEMA 23 series are high torque stepper motors.

This stepper motor with high performance can be optimally used for tasks in the areas of CNC (f. e. milling machines, etc.) or robotics.

## MAIN FEATURES

Shaft	Ø 6.35 x 20 mm (5.85 mm flatspot)
Interface connection	4 wire
Dimensions	56 x 56 x 76 mm
Items delivered	NEMA23 stepper, connection cable

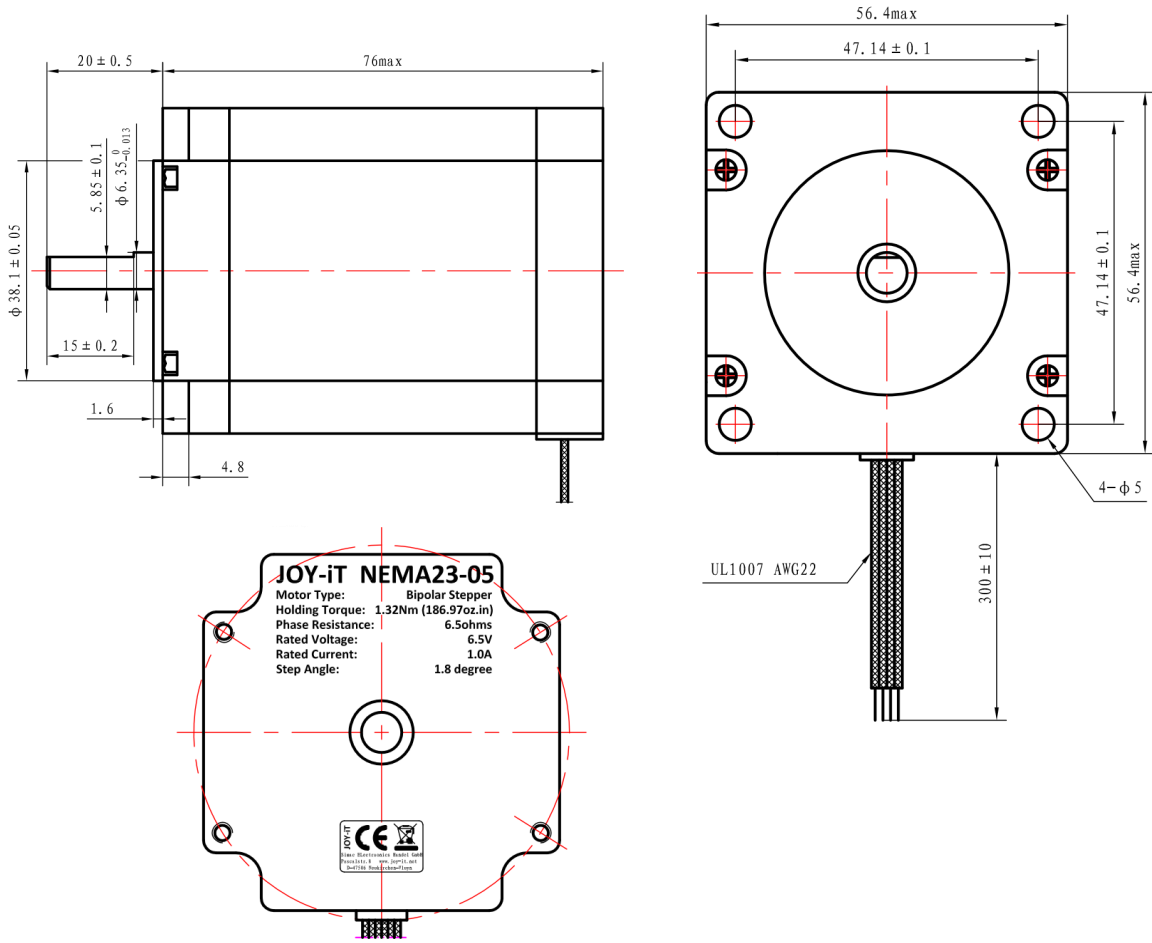
## PERFORMANCE SPECIFICATIONS

Holding torque	1.32 Nm
Rated Voltage	6.5 V
Rated Current	1.0 A
Step Angle	1.8 ° ±5 %
No. of Phases	2
Phase Resistance	6.5 Ω
Phase inductivity	20 mH
Isolation resistance	100 MΩ min. @500 V DC
Isolation class	B (130 °C)
Rotational inertia	460 g·cm <sup>2</sup>
Detent torque	0.07 Nm
Operating temperature	-10 °C - 50 °C

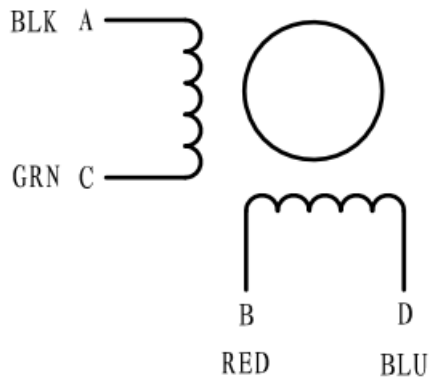
## FURTHER DETAILS

Article No.	NEMA23-05
EAN:	4250236821764
Customs Tariff No.	8501109990

# DRAWING



# WIRING



## TORQUE DIAGRAM

### 2H-845 DRIVER SETTINGS

Voltage 49,21 V

max. current 1,5 A

T(mN.m)

1800

1620

1440

1260

1080

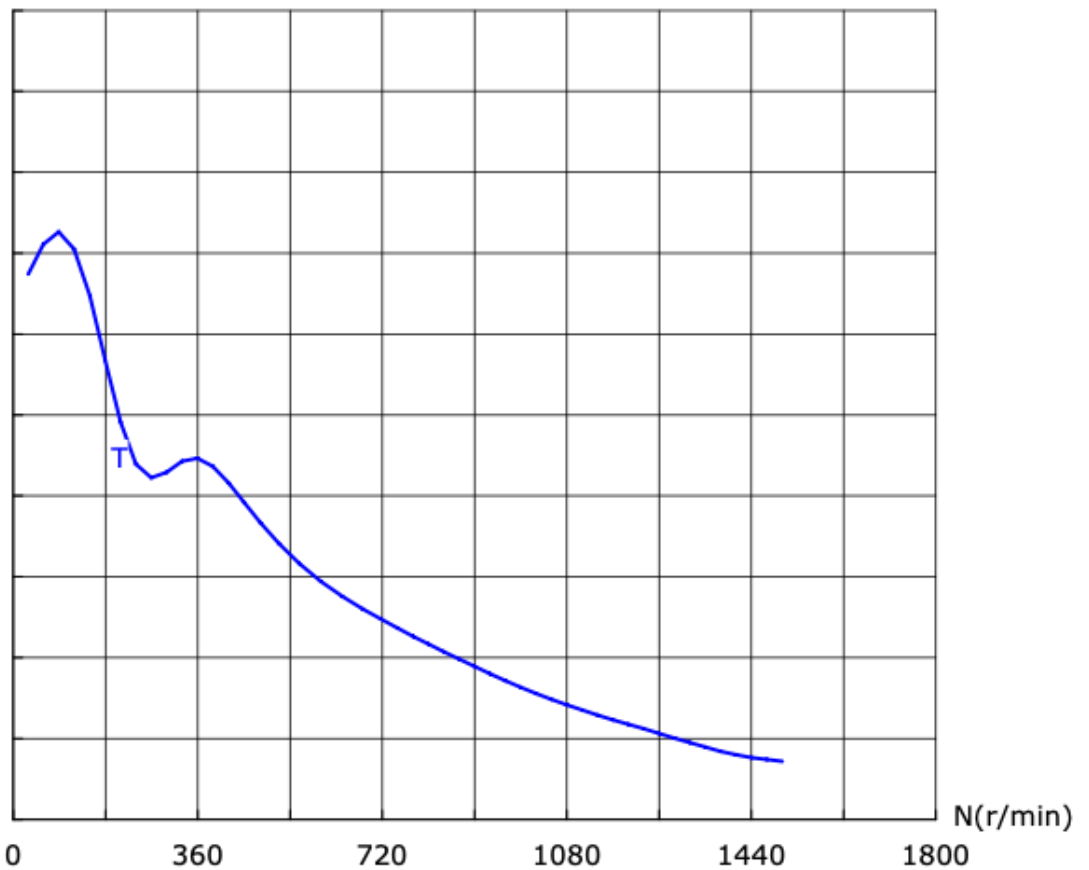
900

720

540

360

180



#### MAX. EFFICIENCY

Efficiency 74.9 %

Torque 529,9 mNm

Current 0,893 A

Speed 600 min<sup>-1</sup>

Output power 32,73 W

#### MAX. TORQUE

Torque 1307,4 mNm

Current 0,595 A

Speed 89 min<sup>-1</sup>

Output power 12,0 W

#### MAX. TORQUE

Torque 446,4 mNm

Current 0,907 A

Speed 717 min<sup>-1</sup>

Output power 33,25 W

Published: 25.10.2021