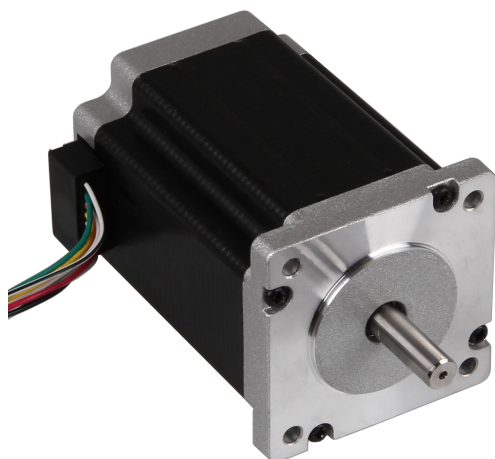


# NEMA23-01

60STH86-3008B Stepper Motor



The NEMA23-01 stepper motor can be optimally used for tasks in the areas of automation, CNC (f.e. engraving lasers, 3D printers, milling machines, etc.) or robotic. With the double shaft, this motor can be used f. i. in connection with an encoder.

## KEY FEATURES

Shaft diameter	Primary: 8mm Secondary: 6.35mm
Specification	60STH86-3008B
Connection	4 jumper cables
Steps per revolution	200
Dimensions	59.9 x 59.0 x 86mm
Scope of delivery	NEMA23-01 motor

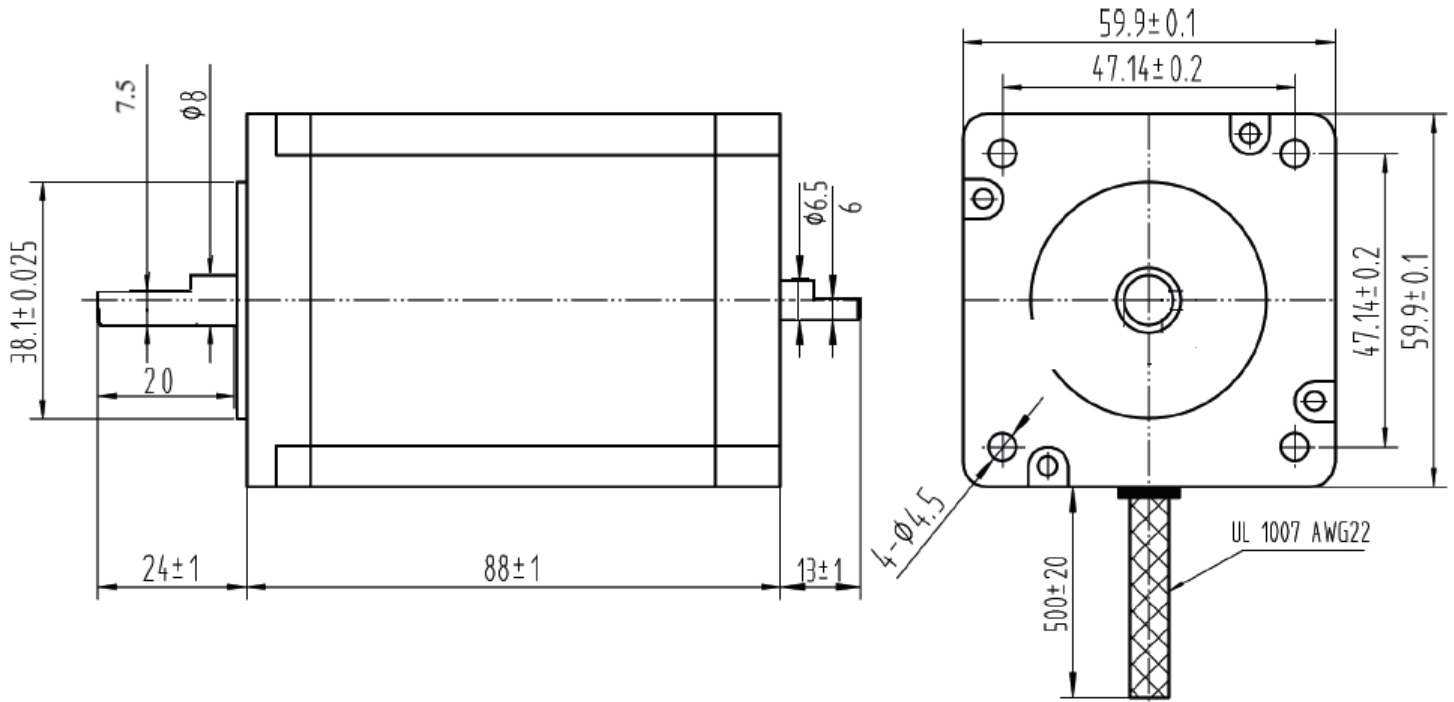
## PERFORMANCE CHARACTERISTICS

Holding Torque	3 Nm
Rated Voltage	2.73V
Rated Current	4.2A
Step Angle	1.8°
Amount of phases	4
Wiring	Spule 1A: Red Spule 1B: Yellow Spule 2A: Blue Spule 2B: Black Spule 3A: White Spule 3B: Orange Spule 4A: Brown Spule 4B: Green

## ADDITIONAL INFORMATION

Article No.	NEMA23-01
EAN	4250236815480
Duty No.	8501101090

## SCHEMATIC DIAGRAM



## WIRING DIAGRAM

