

PC Upgrade Kit

Information on cooler installation

&

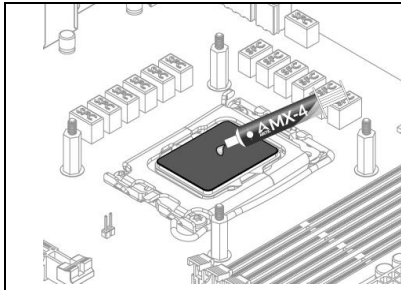
Upgrading from Windows 10 to 11 / FAQ

Cooler assembly

Cooler assembly Freezer 36 eSports Duo	2
Cooler assembly Freezer 36 CO	3
Informationen about Windows 11	4
FAQ / Problems & Solution	5
Service & Contact	7

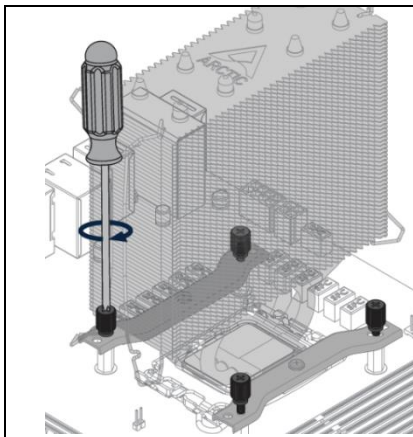
Cooler installation tips (Freezer 36 eSports Duo)

Install the heatsink and fans **before** installing the motherboard into the case.



Apply thermal paste

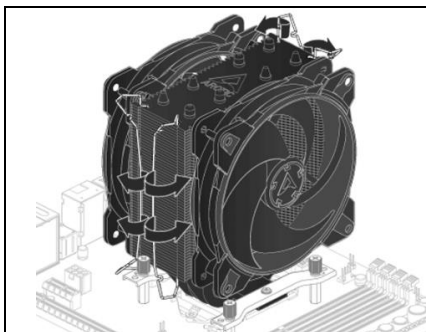
Apply a "pea-sized" amount of thermal paste directly to the center of the CPU. Then the pressure created by attaching the cooler will spread the thermal paste evenly over the surface of the CPU to ensure optimal heat transfer from the CPU to the cooler.



Heatsink assembly

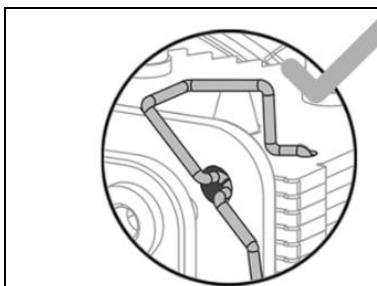
Before installing the cooler, the protective film on the underside must be removed.

Mount the cooler on the pre-installed spacers and screw it in place with the 4 nuts provided.



Fan assembly

Attach the fans to the cooler using the fan clips. Also pay attention to the airflow direction!

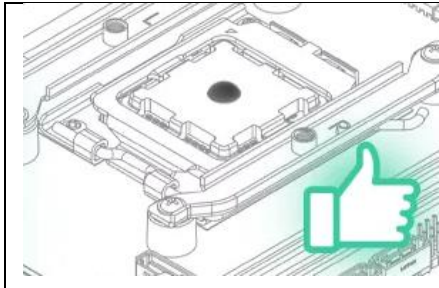


Make sure the brackets are properly seated.

Then connect the fans to the CPU fan connector on the motherboard.

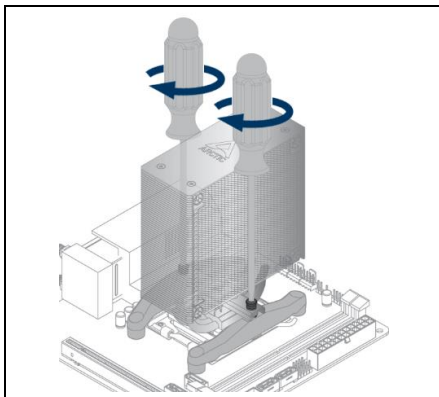
Cooler installation tips (Freezer 36 CO)

Install the heatsink and fans **before** installing the motherboard into the case.



Apply thermal paste

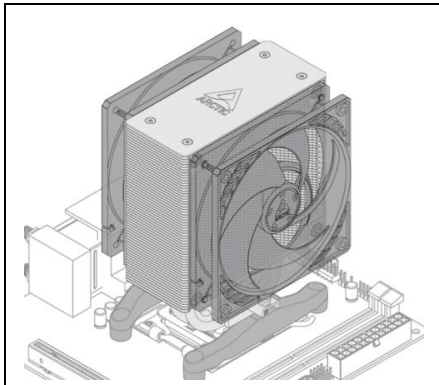
Apply a "pea-sized" amount of thermal paste directly to the center of the CPU. Then the pressure created by attaching the cooler will spread the thermal paste evenly over the surface of the CPU to ensure optimal heat transfer from the CPU to the cooler.



Heatsink assembly

Before installing the cooler, the protective film on the underside must be removed.

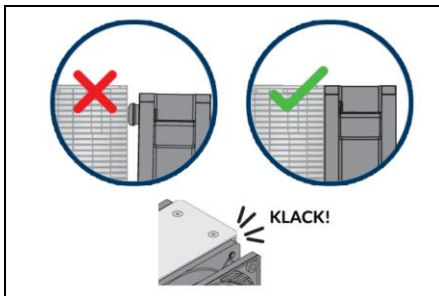
Mount the cooler on the pre-installed spacers and screw it in place with the two screws.



Fan assembly

Attach the fans to the heatsink.

To do this, simply press the fans onto the heatsink. Also pay attention to the airflow direction!



Make sure the fans click into place properly.

Then connect the fans to the CPU fan connector on the motherboard.

Information Windows 11

To upgrade to Windows 11, you need the Hardware Security Module "**TPM 2.0**". The general requirements can be found at:

<https://www.microsoft.com/de-de/windows/windows-11-specifications>

The following **Intel CPUs** are supported:

<https://docs.microsoft.com/en-us/windows-hardware/design/minimum/supported/windows-11-supported-intel-processors>

The following **AMD CPUs** are supported:

<https://docs.microsoft.com/en-us/windows-hardware/design/minimum/supported/windows-11-supported-amd-processors>

Alternatively, this can be found in Windows 10 in the search field (bottom left) under "**Security chip**". Manufacturer information, for example, should be found under specifications.

Or download the following freeware to check:

https://www.chip.de/downloads/WhyNotWin11-Windows-11-PC-Check_183683106.html

In addition, activation in the BIOS is usually necessary.

You can find more detailed information in your enclosed motherboard manual.

Alternatively, it is also available digitally on the manufacturer's website for your motherboard.

In some cases, it may be necessary to carry out a BIOS update of the motherboard.

The following changes must be made in the BIOS:

- CSM disabled
- Secure Boot enabled
- TPM enabled

Note:

TPM 2.0 is usually referred to as "**Intel Platform Trust Technology**" on Intel motherboards.

On AMD motherboards, you will find this under the name "**fTPM**".

FAQ

Question:

The upgrade kit (new motherboard, CPU & RAM) was installed with my old hard drive. But Windows 10 won't start anymore?

Answer:

Since your old Windows 10 was installed in **legacy mode (CSM, MBR)** and your new motherboard uses **UEFI**, there is a boot incompatibility conflict. Here are the solutions:

Please note the following:

[Back up your data to another storage device first!](#)

Due to the large number of PC components or combinations, the solutions described here may not work! We therefore recommend a "clean" reinstallation of Windows 10 or 11.

Solution 1:

If your new motherboard supports CSM (Compatibility Support Module):

1. **Go to the UEFI-BIOS** (usually with DEL, ENTF, F2 or F12 when starting).
2. **Enable CSM or Legacy Boot:**
 - Look for "**Boot Mode**" or "**UEFI/Legacy Boot**".
 - Set it to **Legacy** or **CSM Enabled**.
3. **Disable Secure Boot:**
 - If enabled, set it to **Disabled**.
4. **Save and reboot.**

If your system boots then you can leave it as is or **migrate to UEFI** later.

Solution 2:

Convert Windows 10 from MBR to GPT (recommended)

If your motherboard no longer supports **CSM/Legacy** or you want to use **UEFI**:

1. Start Windows-Setup or a Windows-PE environment:

- Boot from a **Windows 10 installation medium** (USB-Stick created with the *Media Creation Tool*).
- Press Shift + F10, to open the **command prompt**.
-

2. Convert MBR to GPT::

- Check the partitions:

```
Diskpart  
list disk
```

- Find your Windows hard drive (e.g. Disk 0).
- Convert it toGPT:

```
select disk 0  
convert gpt  
exit
```

3. Recreate boot files:

```
bcdboot C:\Windows /s X: /f UEFI
```

Replace **X:** with the EFI partition.

The following command can help:

```
diskpart  
list volume  
exit
```

4. Now activate UEFI-Boot in the UEFI-Bios (see also information on Windows 11) and restart.

If Windows does not boot, a **new installation** may be necessary.

Do you have access to a second PC? Then you can also do the conversion externally with a tool like **MiniTool Partition Wizard**.

Service & Contact:

If you have any further questions or problems with our products, please feel free to contact us.

Our team will process your request as quickly as possible and get back to you.

If you are looking for a manual, data sheet, download or sample code, you can find it on the respective product page.

<https://joy-it.net/en/products>

Of course, we are also available to help you by phone or email:

Tel. +49 (0)2845 9360-50

Available: Mon. - Thurs.: 9:00 a.m. - 5:00 p.m., Fri.: 9:00 a.m. - 12:00 p.m.

Email: service@joy-it.net

Contact form: <https://joy-it.net/en/service>